

[1.77]
45.00

[8.92]
226.60

7.88^{+1.0}_{0.0}

22.88

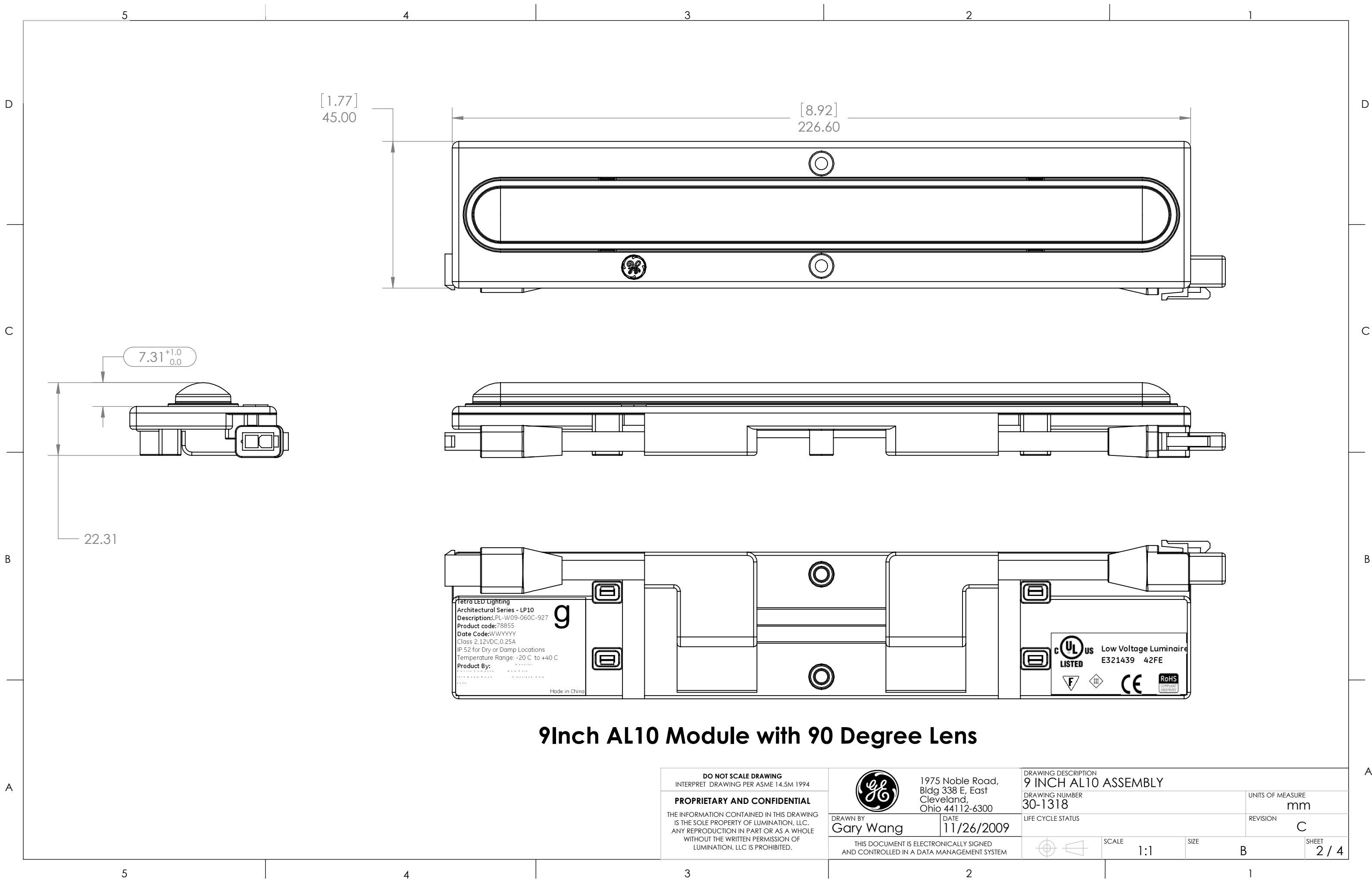
Tetra LED Lighting
 Architectural Series - LP10
 Description: LPL-W09-060C-927
 Product code: 78855
 Date Code: WWYYYY
 Class 2, 12VDC, 0.25A
 IP 52 for Dry or Damp Locations
 Temperature Range: -20 C to +40 C
 Product By:
 Made in China

g

Low Voltage Luminaire
 LISTED E321439 42FE
 CE RoHS

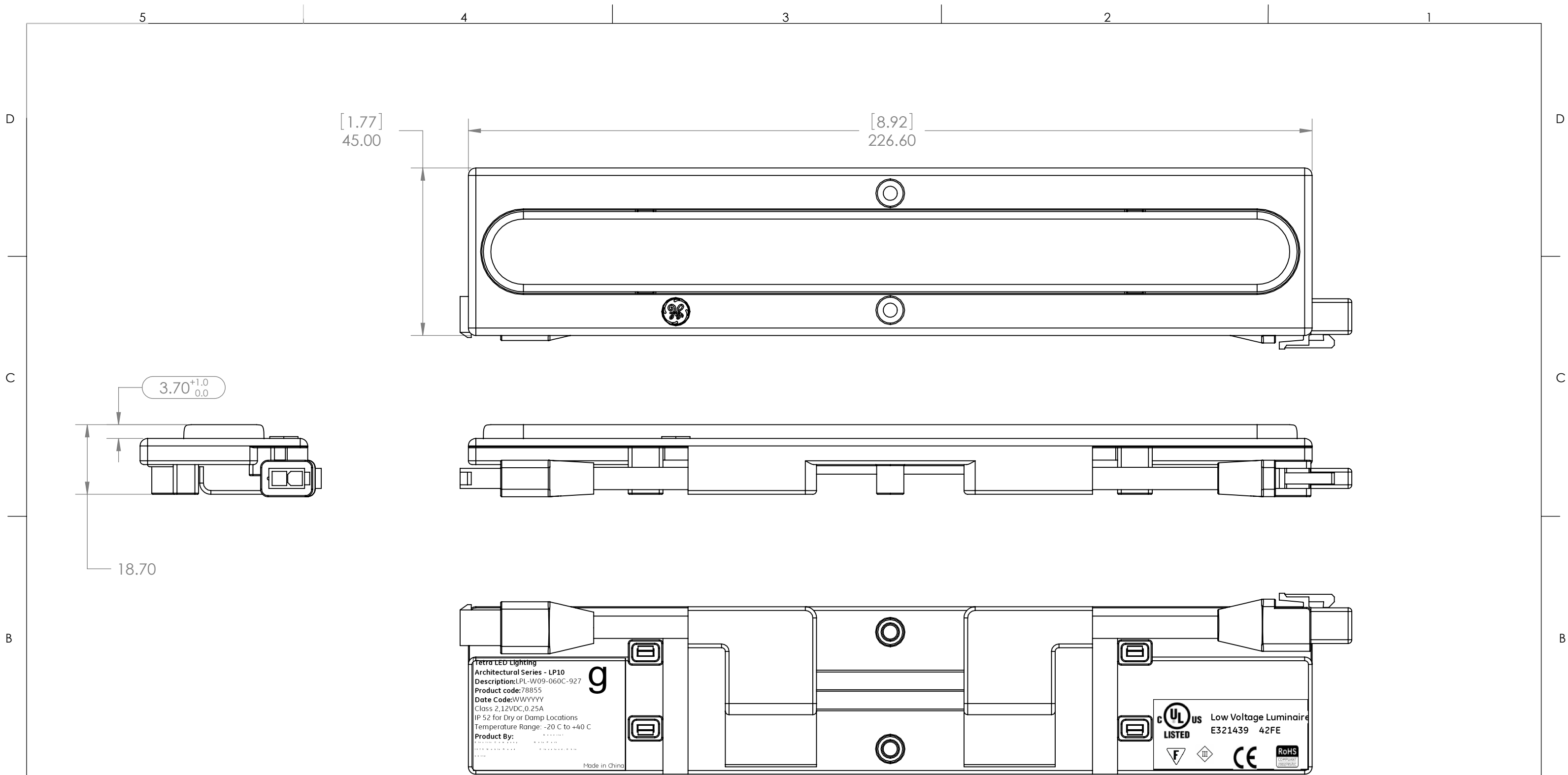
9 Inch AL10 Module with 60 Degree Lens

<p>DO NOT SCALE DRAWING INTERPRET DRAWING PER ASME 14.5M 1994</p> <p>PROPRIETARY AND CONFIDENTIAL THE INFORMATION CONTAINED IN THIS DRAWING IS THE SOLE PROPERTY OF LUMINATION, LLC. ANY REPRODUCTION IN PART OR AS A WHOLE WITHOUT THE WRITTEN PERMISSION OF LUMINATION, LLC IS PROHIBITED.</p>	<p>1975 Noble Road, Bldg 338 E, East Cleveland, Ohio 44112-6300</p>	<p>DRAWING DESCRIPTION 9 INCH AL10 ASSEMBLY</p>		
		<p>DRAWN BY Gary Wang</p>	<p>DATE 11/26/2009</p>	<p>DRAWING NUMBER 30-1318</p>
<p>THIS DOCUMENT IS ELECTRONICALLY SIGNED AND CONTROLLED IN A DATA MANAGEMENT SYSTEM</p>		<p>SCALE 1:2</p>	<p>SIZE B</p>	<p>REVISION C</p>
			<p>LIFE CYCLE STATUS</p>	<p>SHEET 1 / 4</p>



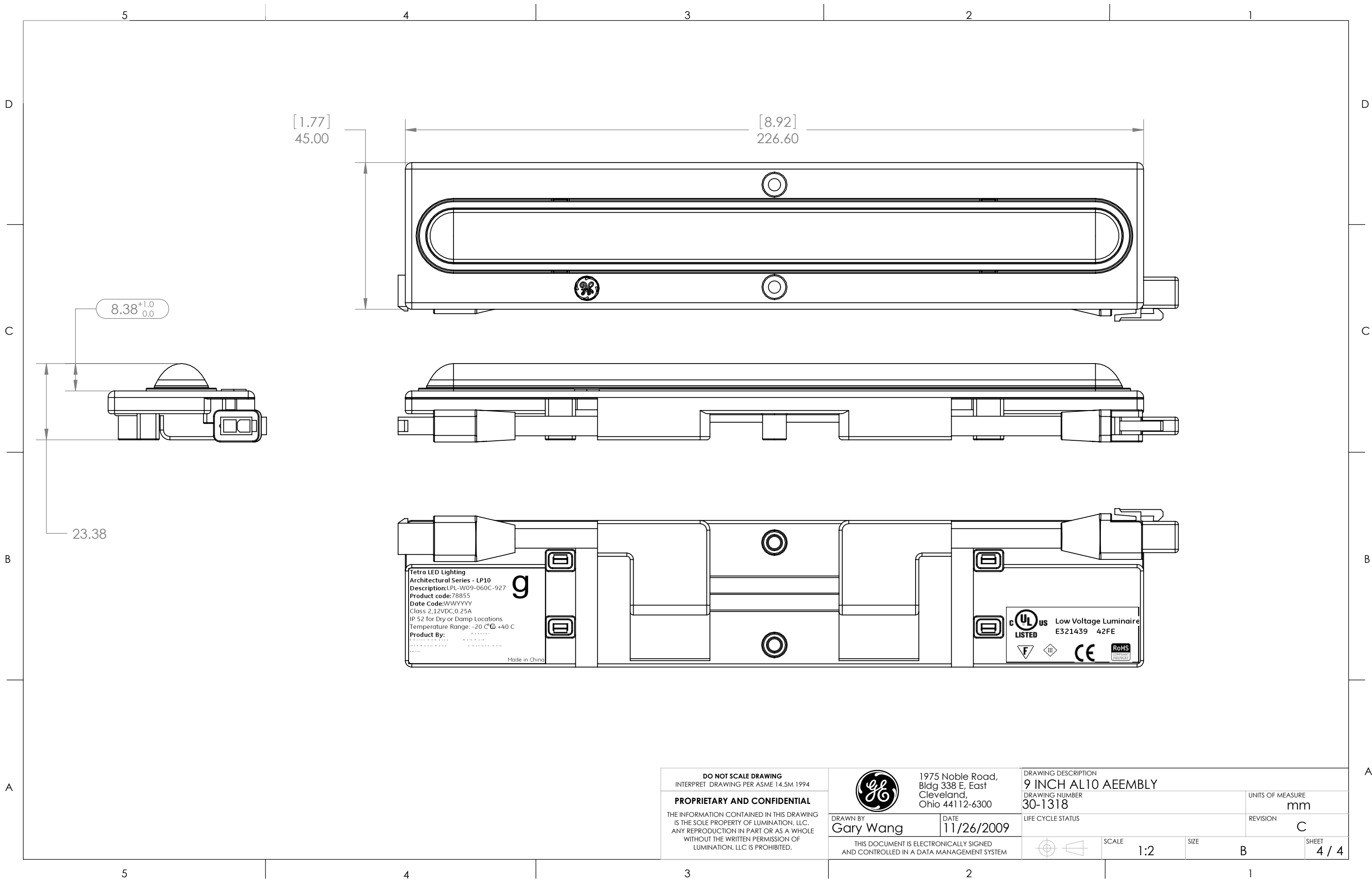
9Inch AL10 Module with 90 Degree Lens

<p>DO NOT SCALE DRAWING INTERPRET DRAWING PER ASME 14.5M 1994</p> <p>PROPRIETARY AND CONFIDENTIAL THE INFORMATION CONTAINED IN THIS DRAWING IS THE SOLE PROPERTY OF LUMINATION, LLC. ANY REPRODUCTION IN PART OR AS A WHOLE WITHOUT THE WRITTEN PERMISSION OF LUMINATION, LLC IS PROHIBITED.</p>	<p>1975 Noble Road, Bldg 338 E, East Cleveland, Ohio 44112-6300</p>	DRAWING DESCRIPTION 9 INCH AL10 ASSEMBLY		UNITS OF MEASURE mm
		DRAWING NUMBER 30-1318	LIFE CYCLE STATUS	REVISION C
<p>DRAWN BY Gary Wang</p> <p>DATE 11/26/2009</p> <p>THIS DOCUMENT IS ELECTRONICALLY SIGNED AND CONTROLLED IN A DATA MANAGEMENT SYSTEM</p>		SCALE 1:1	SIZE B	SHEET 2 / 4



9 Inch AL10 Module with 120 Degree Flat Clear Lens

<p>DO NOT SCALE DRAWING INTERPRET DRAWING PER ASME 14.5M 1994</p> <p>PROPRIETARY AND CONFIDENTIAL THE INFORMATION CONTAINED IN THIS DRAWING IS THE SOLE PROPERTY OF LUMINATION, LLC. ANY REPRODUCTION IN PART OR AS A WHOLE WITHOUT THE WRITTEN PERMISSION OF LUMINATION, LLC IS PROHIBITED.</p>	<p>1975 Noble Road, Bldg 338 E, East Cleveland, Ohio 44112-6300</p>	DRAWING DESCRIPTION 9 INCH AL10 ASSEMBLY	
		DRAWING NUMBER 30-1318	UNITS OF MEASURE mm
<p>DRAWN BY Gary Wang</p> <p>DATE 11/26/2009</p> <p>THIS DOCUMENT IS ELECTRONICALLY SIGNED AND CONTROLLED IN A DATA MANAGEMENT SYSTEM</p>	<p>LIFE CYCLE STATUS</p>	<p>SCALE 1:2</p>	<p>REVISION C</p>
		<p>SIZE B</p>	<p>SHEET 3 / 4</p>



Tetra LED Lighting
 Architectural Series - LP10
 Description: LPL-W09-060C-927
 Product code: 78855
 Date Code: WYYYYY
 Class 2, 12VDC, 0.25A
 IP 52 for Dry or Damp Locations
 Temperature Range: -20 °C to +40 °C
 Product By:
 GE Lighting
 Made in China

UL LISTED Low Voltage Luminaire
 E321439 42FE
 CE RoHS

DO NOT SCALE DRAWING INTERPRET DRAWING PER ASME 14.5M 1994 PROPRIETARY AND CONFIDENTIAL THE INFORMATION CONTAINED IN THIS DRAWING IS THE SOLE PROPERTY OF LUMINATION, LLC. ANY REPRODUCTION IN PART OR AS A WHOLE WITHOUT THE WRITTEN PERMISSION OF LUMINATION, LLC IS PROHIBITED.	1975 Noble Road, Bldg 338 E, East Cleveland, Ohio 44112-6300	DRAWING DESCRIPTION 9 INCH AL10 ASEMBLY DRAWING NUMBER 30-1318		UNITS OF MEASURE mm
		DRAWN BY Gary Wang	DATE 11/26/2009	LIFE CYCLE STATUS
THIS DOCUMENT IS ELECTRONICALLY SIGNED AND CONTROLLED IN A DATA MANAGEMENT SYSTEM		SCALE 1:2	SIZE B	SHEET 4 / 4