

Tetra[®] LED Systems Power Supply

GEPS24-100U-GLX

Installation Guide

24
Volt

Power Supply Features

- Supports Tetra PowerStrip SS, Tetra PowerStrip DS, Tetra miniStrip DS, Tetra Edgestrip, Tetra Contour, Tetra Contour LS, Tetra miniMAX, Tetra MS, Tetra MAX, Tetra PowerMAX, Tetra PowerMAX HO and Tetra Stick LED lighting systems
- UL: Class 2 wiring per NEC Article 725, dry and damp location rated
- IEC: SELV, CE: IP54 rated, must be protected from direct exposure to the weather



BEFORE YOU BEGIN

Read these instructions completely and carefully.

⚠ WARNING/AVERTISSEMENT

RISK OF ELECTRIC SHOCK

- Disconnect power at fuse box or circuit breaker before servicing or installing product.
- Properly ground Tetra[®] power supply.
- AC input connections shall be suitably enclosed. The power supply shall be enclosed or made inaccessible to users during normal use.

RISK OF FIRE

- Minimum power supply spacing to other power supply or other heat producing component shall be at least 4" (101.6 mm) from side to side and 1" (25.4mm) from end to end.
- Use only approved wire for input/output connection. Minimum size 18 AWG (0.82 mm²).
- Follow all local codes.

RISQUES DE DÉCHARGES ÉLECTRIQUES

- Coupez l'alimentation électrique à la boîte de fusibles ou au disjoncteur avant l'entretien ou l'installation du produit.
- Assurez-vous de correctement mettre à terre l'alimentation électrique Tetra[®].

RISQUES D'INCENDIE

- N'utilisez que des fils approuvés pour les entrées/sorties de connexion. Taille minimum 18 AWG (0.82 mm²).
- Respectez tous les codes locaux.

⚠ CAUTION/ATTENTION

RISK OF INJURY

- While performing installations described, gloves, safety glasses or goggles should be worn.

RISQUE DE BLESSURE

- Lors de l'exécution des installations décrites, des gants, des lunettes de sécurité ou des lunettes de protection doivent être portées.

Save These Instructions

Use only in the manner intended by the manufacturer. If you have any questions, contact the manufacturer.

Prepare Electrical Wiring



Electrical Requirements

- Limited to use in dry and damp locations.
- The suitability of rain enclosure shall be determined if intended for wet location.
- The grounding and bonding of the LED Driver shall be done in accordance with National Electric Code (NEC) Article 600.
- Follow all National Electric Codes (NEC) and local codes.

This device complies with part 15 of the FCC Rules. Operation is subject to the following two conditions: (1) This device may not cause harmful interference, and (2) this device must accept any interference received, including interference that may cause undesired operation.

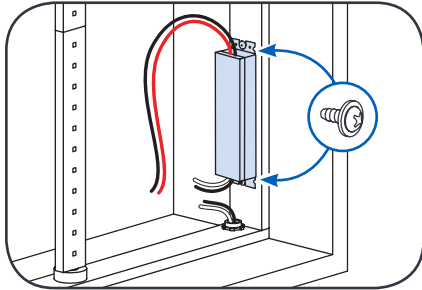
Note: This equipment has been tested and found to comply with the limits for a Class A digital device, pursuant to part 15 of the FCC Rules. These limits are designed to provide reasonable protection against harmful interference when the equipment is operated in a commercial environment. This equipment generates, uses, and can radiate radio frequency energy and, if not installed and used in accordance with the instruction manual, may cause harmful interference to radio communications. Operation of this equipment in a residential area is likely to cause harmful interference in which case the user will be required to correct the interference at his own expense.

This Class [A] RFLD complies with the Canadian standard ICES-005. Ce DEFR de la classe [A] est conforme à la NMB-005 du Canada.

current
powered by GE

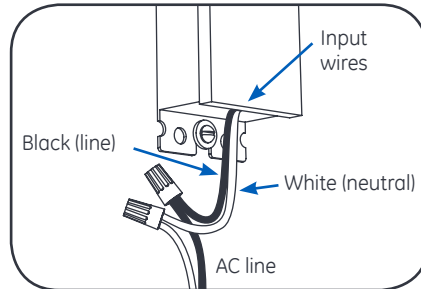


Power Supply Installation

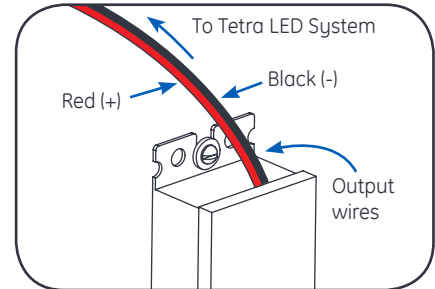


- 1 Mount the power supply. Mounting the power supply base directly to a thermally conductive installation surface can improve thermal performance.

NOTE: All electrical connections should be suitably protected from mechanical damage and the environment. Seal all connections exposed to water with electrical grade self-hardening silicone.



- 2 Connect the AC line to the black (line) and white (neutral) input wires of the power supply using suitable wire connectors.



- 3 Connect the supply wire that is attached to the Tetra LED System to the red (+) and black (-) output wires of the power supply as outlined in the “**Electrical Connections**” section of your LED system’s Installation Instructions.

⚠ WARNING

RISK OF ELECTRIC SHOCK

AC input connections shall be suitably enclosed.

NOTE: For CSA approval, a disconnect/toggle switch of appropriate rating needs to be placed within 29.5 ft. (9 m) of primary side of the power supply. The minimum rating of the switch must be either 120 or 220 Volts AC. The switch must also support twice the amount of input current.

NOTE: When installing power supply, connect to the appropriate sized building breaker or disconnect device for line and neutral connections, in accordance with local, state or country regulations.

NOTE: The grounding and bonding of the power supply and overall sign shall be done in accordance with National Electric Code (NEC) Article 600.

Retrofit Instructions

1. **(Existing Signs Only)** Prior to installation, survey the site for information regarding power and accessibility inside and outside the building. Ensure that the branch circuit supplying the existing transformer or ballast will be within the voltage ratings of the new LED power supply, and have a current rating not exceeding 20A, or that permitted by applicable local, state, or country electrical codes (whichever is less).
2. **(Existing Signs Only)** Remove the existing lighting equipment to be replaced, such as neon tubing or fluorescent tubes; and associated transformers and ballasts. Care should be taken not to break the existing neon or fluorescent tubes. **NOTE:** Follow all federal and local regulations when disposing of neon tubing, fluorescent tubes, transformers and ballasts.
3. **(Existing Signs Only)** If removal of the existing lighting equipment eliminates the disconnect switch, as required by applicable local, state, or country electrical codes; a new disconnect switch must be installed.
4. **(Existing Signs Only)** Make sure the removal of lighting equipment does not compromise the integrity of the sign body (i.e. water intrusion). Fill in all holes 0.5 in. (13 mm) or smaller with the appropriate amount of rated caulk or sealant. For holes greater than 0.5 in. (13 mm), use an aluminum or zinc coated steel patch with rivets and sealant.
5. Using the layout guidelines within the LED module installation instructions, determine required number of LED modules required to illuminate the sign.
6. Using the applicable LED module maximum Loading chart, determine the number of Tetra Class 2 Power Supplies required to power the number of LED modules required to illuminate the sign, so as not to overload any single power supply output.
7. Follow the LED module instructions to properly mount the LED modules.
8. Connect the DC output of the power supply to the LED modules using the Power Supply Installation instructions above.
9. Connect the power unit to the supply in accordance with the applicable local, state, and country electrical codes, and the Power Supply Installation instructions above.
10. If required, the disconnect switch shall be installed by qualified personnel, in accordance with applicable local, state, and country electrical codes.

Power Supply Specifications

Performance Data	Min	Typical	Max
Input Voltage (VAC)	108	120-277	305
Input Frequency (Hz)	-	50/60	-
Input Current (A)	0.35	-	1.1
Output Voltage (VDC)	24	24.5	25.2
Output Current (ADC)	-	-	4.0
Output Power (W)	-	-	96
Environmental Operating Temperature Range	-40°C	+25°C	+60°C*
Environmental Humidity (non-condensing)	0%	-	95%
Environmental Storage Temperature Range	-40°C	-	+85°C
Dimensions	9.5 in. x 1.7 in. x 1.1 in. (241 mm x 43.2 mm x 28 mm)		

*Maximum case temperature is 85°C

Supports Tetra Products	SKUs	Rated Power	Maximum Load per Power Supply	Remote Mounting Distance			
				18 AWG/ 0.82 mm ²	16 AWG/ 1.31 mm ²	14 AWG/ 2.08 mm ²	12 AWG/ 3.31 mm ²
Tetra miniMAX	GEMM2471-W1, GEMM2450-W1, GEMM2441-W1, GEMM2432-W1	0.348W/ module	220 modules/ 110 ft. (35.05 m)	20 ft. (6.1 m)	25 ft. (7.6 m)	35 ft. (10.6 m)	40 ft. (12.1 m)
Tetra MS	GEMS2471-W1, GEMS2450-W1, GEMS2441-W1, GEMS2432-W1	0.228W/ module	340 modules/ 85 ft. (25.91 m)	20 ft. (6.1 m)	25 ft. (7.6 m)	35 ft. (10.6 m)	40 ft. (12.1 m)
Tetra MAX	GEMX2471-W1, GEMX2450-W1, GEMX2441-W1, GEMX2432-W1	0.62W/ module	130 modules/ 87 ft. (26.42 m)	20 ft. (6.1 m)	25 ft. (7.6 m)	35 ft. (10.6 m)	40 ft. (12.1 m)
Tetra PowerMAX	GPEM2471-W1, GPEM2450-W1, GPEM2441-W1, GPEM2432-W1	0.84W/ module	96 modules/ 64 ft. (19.5 m)	20 ft. (6.1 m)	25 ft. (7.6 m)	35 ft. (10.6 m)	40 ft. (12.1 m)
Tetra PowerMAX HO	GPEMH2471-W1CS1, GPEMH2450-W1CS1, GPEMH2441-W1CS1, GPEMH2432-W1CS1	1.2W/ module	64 modules/ 64 ft. (19.5 m)	20 ft. (6.1 m)	25 ft. (7.6 m)	35 ft. (10.6 m)	40 ft. (12.1 m)
Tetra PowerStrip SS	GESS2471-2, GESS2450-2, GESS2441-2, GESS2432-2	2.52W/ module	36 modules	20 ft. (6.1 m)	25 ft. (7.6 m)	35 ft. (10.6 m)	40 ft. (12.1 m)
	GESS24H71-1, GESS24H50-1, GESS24H41-1, GESS24H32-1	2.95W/ module	30 modules	20 ft. (6.1 m)	25 ft. (7.6 m)	35 ft. (10.6 m)	40 ft. (12.1 m)
Tetra PowerStrip DS	GEDS71-2, GEDS50-2, GEDS41-2, GEDS32-2	5.04W/ module	18 modules	20 ft. (6.1 m)	25 ft. (7.6 m)	35 ft. (10.6 m)	40 ft. (12.1 m)
	GEDSH71-2, GEDSH50-2, GEDSH41-2, GEDSH32-2	5.9W/ module	16 modules	20 ft. (6.1 m)	25 ft. (7.6 m)	35 ft. (10.6 m)	40 ft. (12.1 m)
Tetra EdgeStrip	GEBI71-2, GEBI50-2, GEBI41-2, GEBI32-2	2.52W/ module	36 modules/ 36 ft. (10.97 m)	20 ft. (6.1 m)	25 ft. (7.6 m)	35 ft. (10.6 m)	40 ft. (12.1 m)
	GEBIH71-2, GEBIH50-2, GEBIH41-2, GEBIH32-2	5.40W/ module	17 modules/ 18 ft. (5.49 m)	20 ft. (6.1 m)	25 ft. (7.6 m)	35 ft. (10.6 m)	40 ft. (12.1 m)
Tetra miniStrip DS	GEBD71-2, GEWWBDP6-50K, GEWWBDP6-41K, GEWWBDP6	1.68W/ module	50 modules/ 50 ft. (15.23 m)	20 ft. (6.1 m)	25 ft. (7.6 m)	35 ft. (10.6 m)	40 ft. (12.1 m)
	GEBDH71-2, GEBDH50-1, GEBDH41-1, GEBDH32-1	1.94W/ module	42 modules/ 42 ft. (12.79 m)	20 ft. (6.1 m)	25 ft. (7.6 m)	35 ft. (10.6 m)	40 ft. (12.1 m)

Chart continued on next page

Chart continued

Supports Tetra Products	SKUs	Rated Power	Maximum Load per Power Supply	Remote Mounting Distance			
				18 AWG/ 0.82 mm ²	16 AWG/ 1.31 mm ²	14 AWG/ 2.08 mm ²	12 AWG/ 3.31 mm ²
Tetra Contour LS	GEXNLRD-1	1.30W/ ft. (strip)	69 ft. (21m)	20 ft.(6.1 m)	30 ft.(9.1 m)	50 ft.(15.2 m)	86 ft.(26.1 m)
	GEXNLBL-1, GEXNLGL-1	1.73W/ ft. (strip)	52 ft. (15.85 m)	20 ft.(6.1 m)	30 ft.(9.1 m)	50 ft.(15.2 m)	86 ft.(26.1 m)
	GEXNL65-1, GEXNL32-1	3.17W/ ft. (strip)	29 ft. (8.8 m)	20 ft.(6.1 m)	30 ft.(9.1 m)	50 ft.(15.2 m)	86 ft.(26.1 m)
Tetra Contour	GEXNBL-1, GEXNGL-1, GEXNRD-1	1.52W/ ft. (strip)	59 ft. (17.9 m)	20 ft.(6.1 m)	30 ft.(9.1 m)	50 ft.(15.2 m)	86 ft.(26.1 m)
	GEXNYG-1, GEXNRC-1	2.27W/ ft. (strip)	40 ft. (12.19 m)	20 ft.(6.1 m)	30 ft.(9.1 m)	50 ft.(15.2 m)	86 ft.(26.1 m)
	GEXN65-1, GEXN32-1	3.17W/ ft. (strip)	29 ft. (8.8 m)	20 ft.(6.1 m)	30 ft.(9.1 m)	50 ft.(15.2 m)	86 ft.(26.1 m)
Line Fit Light	GEF12DHOLED-1 GEF12SGNHOLED-1 GEF12CWHOLED-1	5.8W/bar	16 ft.	20 ft.(6.1 m)	25 ft.(7.6 m)	35 ft.(10.6 m)	40 ft.(12.1 m)
	GEF18DHOLED-1 GEF18SGNHOLED-1 GEF18CWHOLED-1	7.2W/bar	16 ft.	20 ft.(6.1 m)	25 ft.(7.6 m)	35 ft.(10.6 m)	40 ft.(12.1 m)
	GEF24DHOLED-1 GEF24SGNHOLED-1 GEF24CWHOLED-1	11.5W/bar	16 ft.	20 ft.(6.1 m)	25 ft.(7.6 m)	35 ft.(10.6 m)	40 ft.(12.1 m)
	GEF30DHOLED-1 GEF30SGNHOLED-1 GEF30CWHOLED-1	14.4W/bar	16 ft.	20 ft.(6.1 m)	25 ft.(7.6 m)	35 ft.(10.6 m)	40 ft.(12.1 m)
	GEF36DHOLED-1 GEF36SGNHOLED-1 GEF36CWHOLED-1	17.3W/bar	16 ft.	20 ft.(6.1 m)	25 ft.(7.6 m)	35 ft.(10.6 m)	40 ft.(12.1 m)
	GEF42DHOLED-1 GEF42SGNHOLED-1 GEF42CWHOLED-1	20.2W/bar	16 ft.	20 ft.(6.1 m)	25 ft.(7.6 m)	35 ft.(10.6 m)	40 ft.(12.1 m)
	GEF48DHOLED-1 GEF48SGNHOLED-1 GEF48CWHOLED-1	23.0W/bar	16 ft.	20 ft.(6.1 m)	25 ft.(7.6 m)	35 ft.(10.6 m)	40 ft.(12.1 m)
	GEF60DHOLED-1 GEF60SGNHOLED-1 GEF60CWHOLED-1	28.8W/bar	16 ft.	20 ft.(6.1 m)	25 ft.(7.6 m)	35 ft.(10.6 m)	40 ft.(12.1 m)
	GEF64DHOLED-1 GEF64SGNHOLED-1 GEF64CWHOLED-1	30.2W/bar	16 ft.	20 ft.(6.1 m)	25 ft.(7.6 m)	35 ft.(10.6 m)	40 ft.(12.1 m)
	GEF72DHOLED-1 GEF72SGNHOLED-1 GEF72CWHOLED-1	34.6W/bar	16 ft.	20 ft.(6.1 m)	25 ft.(7.6 m)	35 ft.(10.6 m)	40 ft.(12.1 m)
	GEF84DHOLED-1 GEF84SGNHOLED-1 GEF84CWHOLED-1	40.3W/bar	16 ft.	20 ft.(6.1 m)	25 ft.(7.6 m)	35 ft.(10.6 m)	40 ft.(12.1 m)
	GEF96DHOLED-1 GEF96SGNHOLED-1 GEF96CWHOLED-1	46.1W/bar	16 ft.	20 ft.(6.1 m)	25 ft.(7.6 m)	35 ft.(10.6 m)	40 ft.(12.1 m)

Chart continued on next page

Chart continued

Supports Tetra Products	SKUs	Rated Power	Maximum Load per Power Supply	Remote Mounting Distance			
				18 AWG/ 0.82 mm ²	16 AWG/ 1.31 mm ²	14 AWG/ 2.08 mm ²	12 AWG/ 3.31 mm ²
Tetra Stick	GETSPMSS01871A1 / GETSPMSS01871B1	1.7 W/Stick	47 Sticks	20 ft.(6.1 m)	25 ft.(7.6 m)	35 ft.(10.6 m)	40 ft.(12.1 m)
	GETSPMSS02471A1 / GETSPMSS02471B1 GETSPMSS03071A1 / GETSPMSS03071B1"	2.5 W/Stick	32 Sticks	20 ft.(6.1 m)	25 ft.(7.6 m)	35 ft.(10.6 m)	40 ft.(12.1 m)
	GETSPMSS03671A1 / GETSPMSS03671B1	3.4 W/Stick	24 Sticks	20 ft.(6.1 m)	25 ft.(7.6 m)	35 ft.(10.6 m)	40 ft.(12.1 m)
	GETSPMSS04271A1 / GETSPMSS04271B1	4.2 W/Stick	19 Sticks	20 ft.(6.1 m)	25 ft.(7.6 m)	35 ft.(10.6 m)	40 ft.(12.1 m)
	GETSPMSS04871A1 / GETSPMSS04871B1	5.0 W/Stick	16 Sticks	20 ft.(6.1 m)	25 ft.(7.6 m)	35 ft.(10.6 m)	40 ft.(12.1 m)
	GETSPMSS06071A1 / GETSPMSS06071B1	5.9 W/Stick	14 Sticks	20 ft.(6.1 m)	25 ft.(7.6 m)	35 ft.(10.6 m)	40 ft.(12.1 m)
	GETSPMSS06471A1 / GETSPMSS06471B1	6.7 W/Stick	12 Sticks	20 ft.(6.1 m)	25 ft.(7.6 m)	35 ft.(10.6 m)	40 ft.(12.1 m)
	GETSPMSS07271A1 / GETSPMSS07271B1	7.6 W/Stick	11 Sticks	20 ft.(6.1 m)	25 ft.(7.6 m)	35 ft.(10.6 m)	40 ft.(12.1 m)
	GETSPMSS08471A1 / GETSPMSS08471B1	8.4 W/Stick	10 Sticks	20 ft.(6.1 m)	25 ft.(7.6 m)	35 ft.(10.6 m)	40 ft.(12.1 m)
	GETSPMSS09671A1 / GETSPMSS09671B1	10.1 W/Stick	8 Sticks	20 ft.(6.1 m)	25 ft.(7.6 m)	35 ft.(10.6 m)	40 ft.(12.1 m)
	GETSPMSS10871A1 / GETSPMSS10871B1	10.9 W/Stick	7 Sticks	20 ft.(6.1 m)	25 ft.(7.6 m)	35 ft.(10.6 m)	40 ft.(12.1 m)
	GETSPMSS11771A1 / GETSPMSS11771B1	11.8 W/Stick	7 Sticks	20 ft.(6.1 m)	25 ft.(7.6 m)	35 ft.(10.6 m)	40 ft.(12.1 m)
	GETSPMSS12071A1 / GETSPMSS12071B1	12.6 W/Stick	6 Sticks	20 ft.(6.1 m)	25 ft.(7.6 m)	35 ft.(10.6 m)	40 ft.(12.1 m)
	GETSPMDS01871A1 / GETSPMDS01871B1	3.4 W/Stick	24 Sticks	20 ft.(6.1 m)	25 ft.(7.6 m)	35 ft.(10.6 m)	40 ft.(12.1 m)
	GETSPMDS02471A1 / GETSPMDS02471B1 GETSPMDS03071A1 / GETSPMDS03071B1	5.0W/Stick	16 Sticks	20 ft.(6.1 m)	25 ft.(7.6 m)	35 ft.(10.6 m)	40 ft.(12.1 m)
	GETSPMDS03671A1 / GETSPMDS03671B1	6.8 W/Stick	12 Sticks	20 ft.(6.1 m)	25 ft.(7.6 m)	35 ft.(10.6 m)	40 ft.(12.1 m)
	GETSPMDS04271A1 / GETSPMDS04271B1	8.4 W/Stick	10 Sticks	20 ft.(6.1 m)	25 ft.(7.6 m)	35 ft.(10.6 m)	40 ft.(12.1 m)
	GETSPMDS04871A1 / GETSPMDS04871B1	10.0 W/Stick	8 Sticks	20 ft.(6.1 m)	25 ft.(7.6 m)	35 ft.(10.6 m)	40 ft.(12.1 m)
	GETSPMDS06071A1 / GETSPMDS06071B1	11.8 W/Stick	7 Sticks	20 ft.(6.1 m)	25 ft.(7.6 m)	35 ft.(10.6 m)	40 ft.(12.1 m)
	GETSPMDS06471A1 / GETSPMDS06471B1	13.4 W/Stick	6 Sticks	20 ft.(6.1 m)	25 ft.(7.6 m)	35 ft.(10.6 m)	40 ft.(12.1 m)
	GETSPMDS07271A1 / GETSPMDS07271B1	15.2 W/Stick	5 Sticks	20 ft.(6.1 m)	25 ft.(7.6 m)	35 ft.(10.6 m)	40 ft.(12.1 m)
	GETSPMDS08471A1 / GETSPMDS08471B1	16.8 W/Stick	5 Sticks	20 ft.(6.1 m)	25 ft.(7.6 m)	35 ft.(10.6 m)	40 ft.(12.1 m)
	GETSPMDS09671A1 / GETSPMDS09671B1	20.2W/Stick	4 Sticks	20 ft.(6.1 m)	25 ft.(7.6 m)	35 ft.(10.6 m)	40 ft.(12.1 m)
	GETSPMDS10871A1 / GETSPMDS10871B1	21.8 W/Stick	3 Sticks	20 ft.(6.1 m)	25 ft.(7.6 m)	35 ft.(10.6 m)	40 ft.(12.1 m)
	GETSPMDS11771A1 / GETSPMDS11771B1	23.6 W/Stick	3 Sticks	20 ft.(6.1 m)	25 ft.(7.6 m)	35 ft.(10.6 m)	40 ft.(12.1 m)
	GETSPMDS12071A1 / GETSPMDS12071B1	25.2 W/Stick	3 Sticks	20 ft.(6.1 m)	25 ft.(7.6 m)	35 ft.(10.6 m)	40 ft.(12.1 m)
	GETSPHSS01871A1 / GETSPHSS01871B1	2.4 W/Stick	33 Sticks	20 ft.(6.1 m)	25 ft.(7.6 m)	35 ft.(10.6 m)	40 ft.(12.1 m)
	GETSPHSS02471A1 / GETSPHSS02471B1 GETSPHSS03071A1 / GETSPHSS03071B1	3.6 W/Stick	22 Sticks	20 ft.(6.1 m)	25 ft.(7.6 m)	35 ft.(10.6 m)	40 ft.(12.1 m)
	GETSPHSS03671A1 / GETSPHSS03671B1	4.8 W/Stick	16 Sticks	20 ft.(6.1 m)	25 ft.(7.6 m)	35 ft.(10.6 m)	40 ft.(12.1 m)
	GETSPHSS04271A1 / GETSPHSS04271B1	6.0 W/Stick	13 Sticks	20 ft.(6.1 m)	25 ft.(7.6 m)	35 ft.(10.6 m)	40 ft.(12.1 m)
	GETSPHSS04871A1 / GETSPHSS04871B1	7.2 W/Stick	11 Sticks	20 ft.(6.1 m)	25 ft.(7.6 m)	35 ft.(10.6 m)	40 ft.(12.1 m)
	GETSPHSS06071A1 / GETSPHSS06071B1	8.4 W/Stick	9 Sticks	20 ft.(6.1 m)	25 ft.(7.6 m)	35 ft.(10.6 m)	40 ft.(12.1 m)
	GETSPHSS06471A1 / GETSPHSS06471B1	9.6 W/Stick	8 Sticks	20 ft.(6.1 m)	25 ft.(7.6 m)	35 ft.(10.6 m)	40 ft.(12.1 m)
	GETSPHSS07271A1 / GETSPHSS07271B1	10.8 W/Stick	7 Sticks	20 ft.(6.1 m)	25 ft.(7.6 m)	35 ft.(10.6 m)	40 ft.(12.1 m)
	GETSPHSS08471A1 / GETSPHSS08471B1	12.0 W/Stick	7 Sticks	20 ft.(6.1 m)	25 ft.(7.6 m)	35 ft.(10.6 m)	40 ft.(12.1 m)
	GETSPHSS09671A1 / GETSPHSS09671B1	14.4 W/Stick	5 Sticks	20 ft.(6.1 m)	25 ft.(7.6 m)	35 ft.(10.6 m)	40 ft.(12.1 m)
	GETSPHSS10871A1 / GETSPHSS10871B1	15.6 W/Stick	5 Sticks	20 ft.(6.1 m)	25 ft.(7.6 m)	35 ft.(10.6 m)	40 ft.(12.1 m)
	GETSPHSS11771A1 / GETSPHSS11771B1	16.8 W/Stick	5 Sticks	20 ft.(6.1 m)	25 ft.(7.6 m)	35 ft.(10.6 m)	40 ft.(12.1 m)
	GETSPHSS12071A1 / GETSPHSS12071B1	18.0 W/Stick	4 Sticks	20 ft.(6.1 m)	25 ft.(7.6 m)	35 ft.(10.6 m)	40 ft.(12.1 m)

Chart continued on next page

Chart continued

Supports Tetra Products	SKUs	Rated Power	Maximum Load per Power Supply	Remote Mounting Distance			
				18 AWG/ 0.82 mm ²	16 AWG/ 1.31 mm ²	14 AWG/ 2.08 mm ²	12 AWG/ 3.31 mm ²
Tetra Stick	GETSPHDS01871A1 / GETSPHDS01871B1	4.8 W/Stick	16 Sticks	20 ft.(6.1 m)	25 ft.(7.6 m)	35 ft.(10.6 m)	40 ft.(12.1 m)
	GETSPHDS02471A1 / GETSPHDS02471B1 GETSPHDS03071A1 / GETSPHDS03071B1	7.2 W/Stick	11 Sticks	20 ft.(6.1 m)	25 ft.(7.6 m)	35 ft.(10.6 m)	40 ft.(12.1 m)
	GETSPHDS03671A1 / GETSPHDS03671B1	9.6 W/Stick	8 Sticks	20 ft.(6.1 m)	25 ft.(7.6 m)	35 ft.(10.6 m)	40 ft.(12.1 m)
	GETSPHDS04271A1 / GETSPHDS04271B1	12.0 W/Stick	7 Sticks	20 ft.(6.1 m)	25 ft.(7.6 m)	35 ft.(10.6 m)	40 ft.(12.1 m)
	GETSPHDS04871A1 / GETSPHDS04871B1	14.4 W/Stick	5 Sticks	20 ft.(6.1 m)	25 ft.(7.6 m)	35 ft.(10.6 m)	40 ft.(12.1 m)
	GETSPHDS06071A1 / GETSPHDS06071B1	16.8 W/Stick	5 Sticks	20 ft.(6.1 m)	25 ft.(7.6 m)	35 ft.(10.6 m)	40 ft.(12.1 m)
	GETSPHDS06471A1 / GETSPHDS06471B1	19.2 W/Stick	4 Sticks	20 ft.(6.1 m)	25 ft.(7.6 m)	35 ft.(10.6 m)	40 ft.(12.1 m)
	GETSPHDS07271A1 / GETSPHDS07271B1	21.6 W/Stick	3 Sticks	20 ft.(6.1 m)	25 ft.(7.6 m)	35 ft.(10.6 m)	40 ft.(12.1 m)
	GETSPHDS08471A1 / GETSPHDS08471B1	24.0 W/Stick	3 Sticks	20 ft.(6.1 m)	25 ft.(7.6 m)	35 ft.(10.6 m)	40 ft.(12.1 m)
	GETSPHDS09671A1 / GETSPHDS09671B1	28.8 W/Stick	2 Sticks	20 ft.(6.1 m)	25 ft.(7.6 m)	35 ft.(10.6 m)	40 ft.(12.1 m)
	GETSPHDS10871A1 / GETSPHDS10871B1	31.2 W/Stick	2 Sticks	20 ft.(6.1 m)	25 ft.(7.6 m)	35 ft.(10.6 m)	40 ft.(12.1 m)
	GETSPHDS11771A1 / GETSPHDS11771B1	33.6 W/Stick	2 Sticks	20 ft.(6.1 m)	25 ft.(7.6 m)	35 ft.(10.6 m)	40 ft.(12.1 m)
	GETSPHDS12071A1 / GETSPHDS12071B1	36.0 W/Stick	2 Sticks	20 ft.(6.1 m)	25 ft.(7.6 m)	35 ft.(10.6 m)	40 ft.(12.1 m)

Troubleshooting

Symptom	Solution
All LEDs are OFF	<ul style="list-style-type: none"> • The GEPS24-100UGLX features a new built in output overload shutdown feature that automatically resets when the AC supply is removed and reapplied. So if all letters are off, first verify whether or not the output can be reset by first switching off then switching back on the AC supply. If the letters do not re-light, then proceed to the following solutions. • Check AC input connection and/or check circuit breaker. • Check wire connection(s) at the Tetra® LED System and power supply for improper termination(s) or short circuits. Properly terminate or replace the wire connection(s). • Check that connections are the red striped wire (+) of the LED strip to the red wire (+) of the power supply and the white wire (-) of the LED strip to the black or blue wire (-) of the power supply. • Ensure the overall length of the Tetra® LED System does not exceed the maximum load. If so, remove the excess load and cycle the AC supply to reset the drivers built in overload protection.
Some LEDs appear dim	<ul style="list-style-type: none"> • Ensure the length of supply wire is equal to or below the recommended remote mounting distance.
Some of the LEDs are not illuminated	<ul style="list-style-type: none"> • Check wire connection(s) at the Tetra® LED System and power supply for improper termination(s) or short circuits. Properly terminate or replace the wire connection(s). • Check that connections are the red striped wire (+) of the LED strip to the red wire (+) of the power supply and the white wire (-) of the LED strip to the black or blue wire (-) of the power supply.

This product is intended to be used as a lamp control gear that is installed after the mains control switch.

Conforms to the following standards:



current
powered by GE

All trademarks are the property of their respective owners. Information provided is subject to change without notice. All values are design or typical values when measured under laboratory conditions. Current, powered by GE is a business of the General Electric Company.
© 2018 GE.

