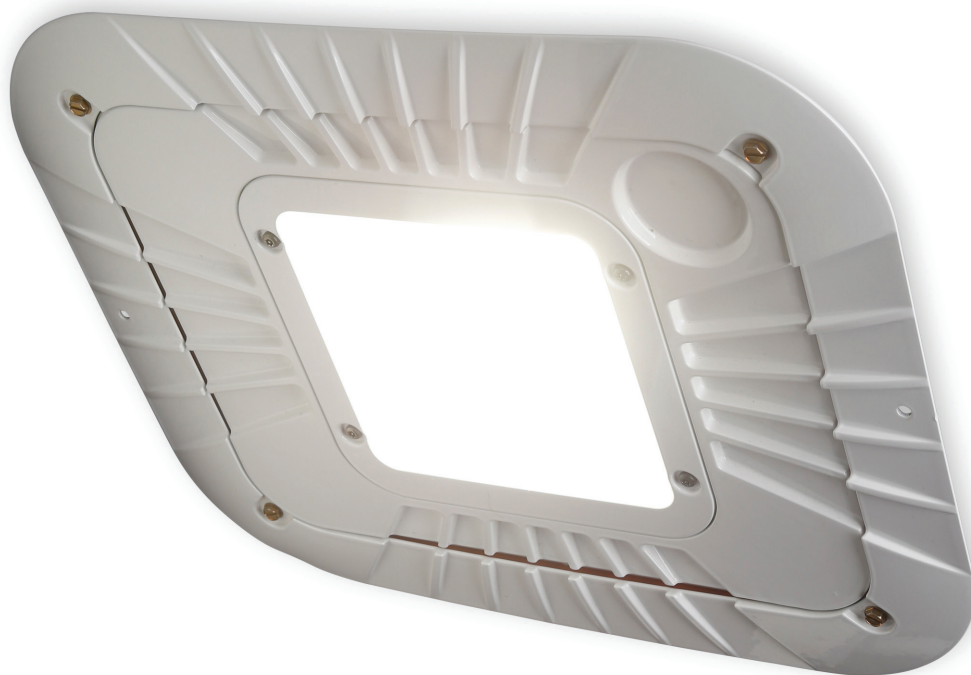


GE  
Lighting

# Evolve™ LED Area Lighting

Recessed Canopy Light (ECRA)



imagination at work

## Product Features

The new GE Evolve™ LED Recessed Canopy Light provides an energy-efficient and robust means for lighting areas with canopies, such as gas stations, truck stops and drive-thrus at banks, pharmacies and restaurants. Offering easy installation and maintenance, along with various lumen levels at both 4000K and 5000K color temperatures, this canopy light provides a great LED lighting solution for their outdoor space.

### Housing

- Die -cast aluminum housing.
- Integral heat sink for maximum heat transfer.
- Meets 1.5G vibration standards per ANSI C136.31-2010.

### LED & Optical Assembly




- Structured LED array for optimized area lighting photometric distributions.
- Evolve™ light engine consisting of reflective technology designed to optimize application efficiency and minimize glare.
- Utilizes high brightness LEDs, 70 CRI at 4000K and 5000K color temperature.
- LM-79 tests and reports are performed in accordance with IESNA standards.

### Lumen Maintenance

ECRA SKU	Lxx@50Khrs
A5	L90
B5	L90
C5	L85

- Per TM-21 calculator.
- L70 > 100,000 hrs for all power levels.
- Mounted to Sheet Metal per typical canopy install.
- Ambient Operating condition 25°C.

### Ratings

- /° Listed, suitable for wet locations per UL 1598.
- IP66 rated optical enclosure per ANSI C136.25-2009.
- Temperature rated at -40° to 50°C (C5 SKUs: -40° to 40°C).
- Upward Light Output Ratio (ULOR) = 0.
- Compliant with the material restriction requirements of RoHS.
-  DLC Listed.

Please refer to the DLC QPL website for the latest and most complete information. [www.designlights.org/QPL](http://www.designlights.org/QPL)

### Finish

- Corrosion resistant polyester powder painted.
- Standard colors: White, Dark Bronze and Black.

### Electrical

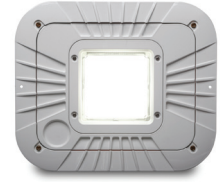
- 120-277 volt and 347-480 volt (B5 and C5 optical only), 50/60Hz.
- System power factor is >90% and THD<20%
- Class "A" Sound rating
- EMI: Title 47 CFR 15 Class A
- Motion sensor and integral photo electric sensor available.
- Surge Protection Options: For 120-277VAC and 347-480VAC per IEEE/ANSI C136.2-2015.
  - 6kV/3kA "Basic" standard.
  - 10kV/5kA "Enhanced" R option.

### Warranty

- Limited 5-Year Warranty for product launch standard.

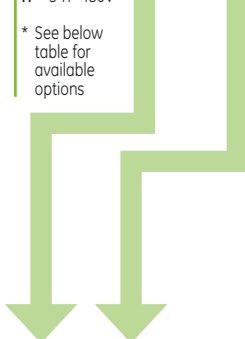
# Ordering Number Logic

## Evolve™ LED Recessed Canopy Light (ECRA)



**E C R**    **A**    **F**    **5**    **B**

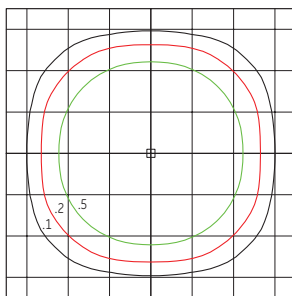
PRODUCT ID	PRODUCT GENERATION	VOLTAGE	OPTICAL CODE	LENS TYPE	DRIVE CURRENT	LED COLOR TEMP	MOTION SENSOR/ PE FUNCTION	MOUNTING	COLOR	OPTIONS
<b>E</b> = Evolve <b>C</b> = Canopy <b>R</b> = Recessed	<b>A</b> = Photometric Series "A"	<b>0</b> = 120 - 277V <b>H</b> = 347-480V*		<b>F</b> = Flat Lens	<b>5</b> = 525mA	<b>40</b> = 4000K <b>50</b> = 5000K	<b>1</b> = None <b>4</b> = Motion Sensor and Integral Photocell*	<b>B</b> = 12" Recessed Mount	<b>WHITE</b> = White <b>BLCK</b> = Black <b>DKBZ</b> = Dark Bronze  Contact manufacturer for additional colors.	<b>D</b> = Dimmable (0-10 Volt Input) † <b>002</b> = Non-Dimming with Junction Box <b>D01</b> = Dimming with Junction Box <b>R</b> = 10kV/5kA Surge Protection <b>M</b> = NOM31 † Dimming leads will be provided and terminated with quick-disconnect terminals.



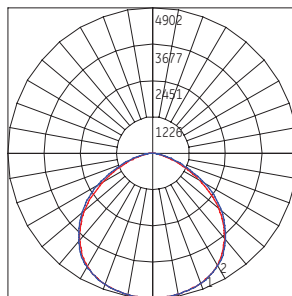
TYPE V	PHOTOMETRIC TYPE	OPTICAL CODE	LENS TYPE	TYPICAL INITIAL LUMENS		TYPICAL SYSTEM WATTAGE		IES FILE NUMBERS	
				4000K	5000K	120-277V	347-480V	4000K	5000K
	Symmetric Wide	A5	Flat Lens	4170	4230	35	NA	ECRA_A5F540__120-277V.ies	ECRA_A5F550__120-277V.ies
	Symmetric Wide	B5	Flat Lens	8010	8110	64	64	ECRA_B5F540__.ies	ECRA_B5F550__.ies
	Symmetric Wide	C5	Flat Lens	13410	13550	110	110	ECRA_C5F540__.ies	ECRA_C5F550__.ies

## Photometrics

ECRA Type V - Symmetric Wide - Flat Lens  
13,550 Lumens, 5000K ECRA\_C5F550\_\_.ies



Grid Distance in Units of Mounting Height of 15'  
Initial Footcandle Values at Grade

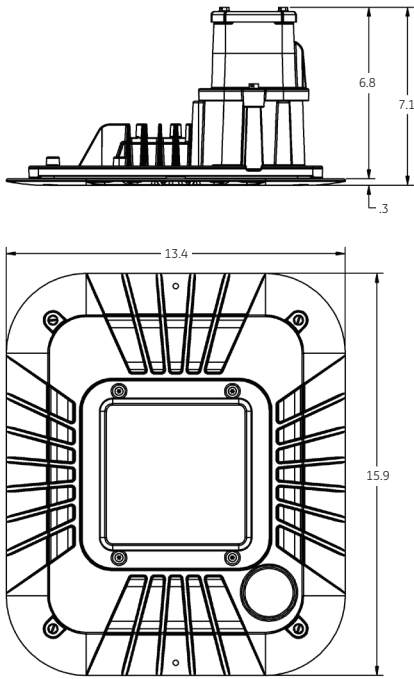


— Vertical plane through horizontal angle of maximum candlepower at 60°  
— Horizontal cone through vertical angle of maximum candlepower at 4°

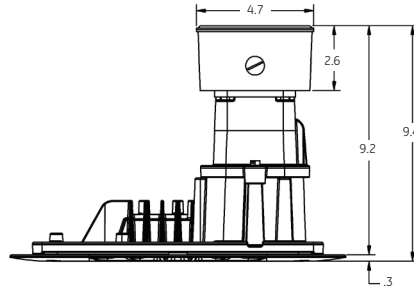
# Product Dimensions

## Evolve™ LED Recessed Canopy Light (ECRA)

### Standard Lens



### With Optional Electrical Junction Box: 002, D01

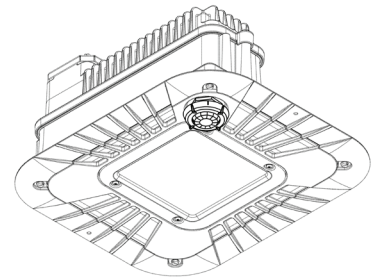


### DATA

- Approximate Net Weight: Not to exceed 15 lbs.

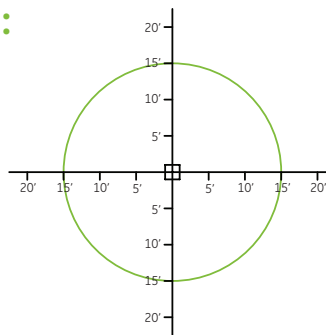
### Motion Sensing Option:

- Intended for 8-25ft mounting heights.
- Provides a coverage area radius for walking motion of 15-20ft.
- Provides 360° of coverage.
- Factory pre-set 50% dimmed light output with no occupancy.
- May be reprogrammed using additional remote programmer.  
Remote Programmer part number: WS FSIR-100 PROGRAMMER (197634)
- Photoelectric control is integrated through the motion sensor, and is offered as standard.



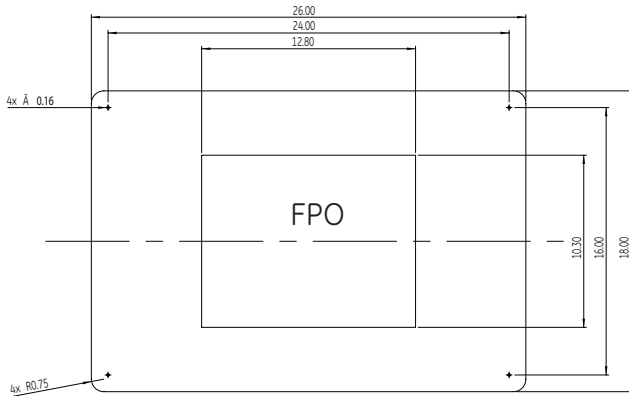
### Approximate Sensor Pattern:

Canopy Fixture  
15 ft. Mounting Height



# Evolve™ Recessed Canopy Light Accessories

All accessory product ordered and shipped separate from the luminaire.  
Contact manufacturer for more information.

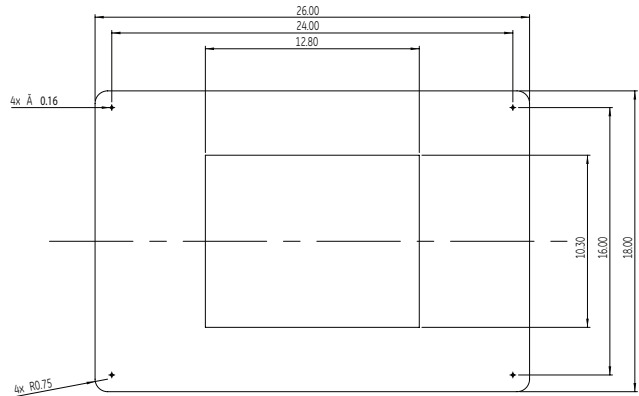


## Beauty Plates

24" & 32" Escutcheon plates designed to cover unsightly canopy ceilings.

E C R                      E

Product ID	Series	Detail	Color
E = Evolve C = Canopy R = Housing	E = Escutcheon Plate	1 = 24" x 24" Square 2 = 32" x 32" Square	<b>WHITE</b> = White <b>BLCK</b> = Black <b>DKBZ</b> = Dark Bronze  RAL custom colors available. Contact Manufacturer.



## Mounting Plates

26" x 18" Mounting plates designed to ...

E C R                      M

Product ID	Series	Detail	Color
E = Evolve C = Canopy R = Housing	E = Mounting Plate*	1 = 26" x 18"	<b>WHITE</b> = White <b>BLCK</b> = Black <b>DKBZ</b> = Dark Bronze  RAL custom colors available. Contact Manufacturer.

\* Can be used to hold the weight of the luminaire.



[www.gelighting.com](http://www.gelighting.com)

GE and the GE Monogram are trademarks of the General Electric Company. All other trademarks are the property of their respective owners. Information provided is subject to change without notice. All values are design or typical values when measured under laboratory conditions. GE Lighting is a business of the General Electric Company.  
© 2016 GE.

OLP3101 (Rev 04/21/16)