

GE  
Lighting

# Evolve™ LED Wall Pack

N Series (EWNA)



imagination at work

## Product Features

The next generation of the GE Evolve™ LED Wall Pack is designed to efficiently illuminate walkways, area, and general lighting applications. The EWNA features an advanced LED optical system that provides high uniformity, excellent vertical light distribution, reduced on-site glare and effective security light levels. The EWNA Wall Pack offers identical photometrics to the EANA Area Light, which allows lighting designers to capitalize on the same features without compromising site layouts. In keeping with a sleek design strategy, this product offers a modern look, balancing the need for photometric scalability with reliable workhorse performance.

### Applications

- Wall mounted, site, area and general lighting utilizing an advanced LED optical system providing uniformity, vertical light distribution, reduced on-site glare and effective security light levels.

### Housing

- Die-cast aluminum housing.
- Slim architectural design incorporates an integral heat sink and light engine, ensuring maximum heat transfer, long LED life, and a reduced Effective Projected Area (EPA).
- Meets 1G vibration level per ANSI C136.31-2001. For 2G rating contact manufacturer.


### LED & Optical Assembly

- Structured LED array for optimized area light and wall pack photometric distribution.
- Evolve™ LED light engine utilizes reflective technology to optimize application efficiency and minimize glare.
- Utilizes high brightness LEDs, 70 CRI at 4000K & 5000K typical.

### Lumen Maintenance

- System rating is L85 at 50,000 hours, with L70 > 100,000 hours.

### Ratings

- /cUL listed, suitable for wet locations. (For cUL availability contact manufacturer)
- IP66 rated optical enclosure per ANSI C136.25-2009.
- Temperature rated at -40° to 50°C.
- Upward Light Output Ratio (ULOR) = 0
- Title 24 compliant with "H" motion sensor option.
- Compliant with the material restriction requirements of RoHS.

-  DLC Listed

Please refer to the DLC QPL website for the latest and most complete information.  
[www.designlights.org/QPL](http://www.designlights.org/QPL)

### Mounting

- Flush wall mount with convenient tab and slot mounting for easy "J" box installation. 1/2" conduit holes are included for non-"J" box installation.

### Finish

- Corrosion resistant polyester powder painted, minimum 2.0 mil. thickness.
- Standard colors: Black and Dark Bronze.
- RAL & custom colors available.

### Electrical

- 120-277 volt and 347-480 volt available.
- System power factor is >90% and THD <20%.
- Photo electric sensors (PE) available for all voltages.
- GE dimmable PE socket is available making the unit "adaptive controls ready." Contact manufacturer for details.
- Dimming:
  - Wired 0-10V continuous dimming with "D" option code
  - Stand-alone motion sensor based dimming using "H" option code
- Surge Protection Options:  
For 120-277VAC and 347-480VAC per IEEE/ANSI C136.2-2014.
  - 6kV/3kA "Basic" surge protection, standard.
  - 10kV/5kA "Enhanced" surge protection available with "R" option code.

### Accessories

- Escutcheon Plates - See page 6

# Ordering Number Logic

## Evolve LED Wall Pack N Series (EWNA)



**E W N A**      **5**

PROD. ID	PHOTOMETRIC SERIES	VOLTAGE	OPTICAL CODE	DRIVE CURRENT	LED COLOR TEMP	PE FUNCTION	MOUNTING ARM	COLOR	OPTIONS
E = Evolve W = Wall Pack N = Housing Series	A = Photometric Series "A"	0 = 120-277 1 = 120* 2 = 208* 3 = 240* 4 = 277* 5 = 480* H = 347-480V D = 347*		5 = 525mA	40 = 4000K 50 = 5000K	1 = None 2 = PE Rec. 3 = Internal PE (Button PE) * 4 = PE Rec. with Shorting cap 5 = PE Rec. with Control ** A = ANSI C136.41 7-pin PE Receptacle †# D = ANSI C136.41 7-pin PE Receptacle with Shorting Cap †# * Only available with discrete voltages. Not available with voltage options D, H or 5. ** PE control not available for 347-480V. Must be a discrete voltage (347V or 480V). † When ordering PE function socket A or D, a dimming driver must also be ordered under the "OPTIONS" column. # Order Dimming/Control PE as a separate item.	N = None Required	BLCK = Black DKBZ = Dark Bronze GRAY = Gray WHITE = White Contact manufacturer for other colors.	D = Dimming (0-10 Volt Input) † F = Fusing R = 10kV Enhanced Surge Protection * H = Motion Sensor # † Dimming leads will be provided through the back of the arm, unless specified with A or D PE Function. * R & H options can not be purchased together. # Dimming is standard with H option code. Do not also select D option. Not compatible with PE options A, or D.

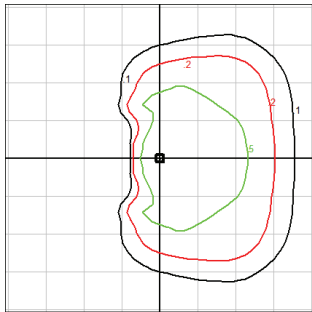


	OPTICAL CODE	TYPE	TYPICAL INITIAL LUMENS		TYPICAL SYSTEM WATTAGE		BUG RATINGS*		IES FILE NUMBER	
			4000K	5000K	120-277V	347-480V	4000K	5000K	4000K	5000K
TYPE IV	A4	Asymmetric Forward	3,730	3,750	46	46	1-0-1	1-0-1	EWNA_A4540__IES	EWNA_A4550__IES
	B4	Asymmetric Forward	5,510	5,540	65	65	1-0-2	1-0-2	EWNA_B4540__IES	EWNA_B4550__IES
	C4	Asymmetric Forward	7,180	7,210	85	85	1-0-2	1-0-2	EWNA_C4540__IES	EWNA_C4550__IES
	D4	Asymmetric Forward	8,810	8,850	104	104	1-0-2	1-0-2	EWNA_D4540__IES	EWNA_D4550__IES
	E4	Asymmetric Forward	10,370	10,410	123	123	2-0-2	2-0-2	EWNA_E4540__IES	EWNA_E4550__IES
TYPE III	F4	Asymmetric Forward	12,320	12,380	148	148	2-0-3	2-0-3	EWNA_F4540__IES	EWNA_F4550__IES
	A3	Asymmetric Wide	4,070	4,090	46	46	1-0-1	1-0-1	EWNA_A3540__IES	EWNA_A3550__IES
	B3	Asymmetric Wide	6,010	6,040	65	65	1-0-1	1-0-1	EWNA_B3540__IES	EWNA_B3550__IES
	C3	Asymmetric Wide	7,830	7,860	85	85	1-0-2	1-0-2	EWNA_C3540__IES	EWNA_C3550__IES
	D3	Asymmetric Wide	9,620	9,650	104	104	2-0-2	2-0-2	EWNA_D3540__IES	EWNA_D3550__IES
	E3	Asymmetric Wide	11,320	11,360	123	123	2-0-2	2-0-2	EWNA_E3540__IES	EWNA_E3550__IES
TYPE II	F3	Asymmetric Wide	13,450	13,500	148	148	2-0-2	2-0-2	EWNA_F3540__IES	EWNA_F3550__IES
	A2	Asymmetric Narrow	3,940	3,960	46	46	1-0-1	1-0-1	EWNA_A2540__IES	EWNA_A2550__IES
	B2	Asymmetric Narrow	5,820	5,850	65	65	1-0-1	1-0-1	EWNA_B2540__IES	EWNA_B2550__IES
	C2	Asymmetric Narrow	7,580	7,620	85	85	2-0-2	2-0-2	EWNA_C2540__IES	EWNA_C2550__IES
	D2	Asymmetric Narrow	9,310	9,350	104	104	2-0-2	2-0-2	EWNA_D2540__IES	EWNA_D2550__IES
	E2	Asymmetric Narrow	10,960	11,010	123	123	2-0-2	2-0-2	EWNA_E2540__IES	EWNA_E2550__IES
F2	Asymmetric Narrow	13,020	13,080	148	148	2-0-2	2-0-2	EWNA_F2540__IES	EWNA_F2550__IES	

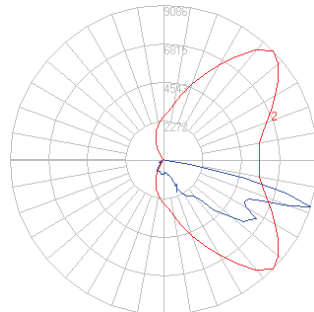
\*Rating values for B and G are based on rated lumens and may vary due to flux tolerances.

# Photometrics

**EWNA Type IV - Asymmetric Forward (F4)**  
 12,380 Lumens, 5000K (EWNA\_F4550\_\_IES)

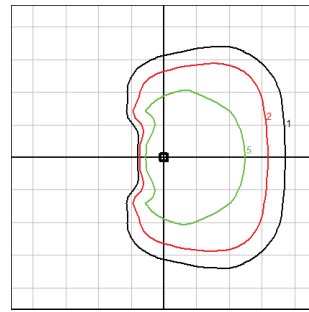


Grid Distance in Units  
 of Mounting Height at 30' Initial  
 Footcandle Values at Grade

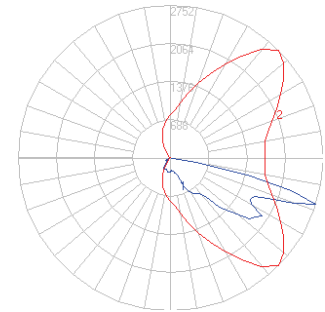


— Vertical plane through horizontal angle  
 of maximum candlepower at 45°  
 — Vertical plane through horizontal angle of 72.5°

**EWNA Type IV - Asymmetric Forward (A4)**  
 3,750 Lumens, 5000K (EWNA\_A4550\_\_-120-277V.IES)

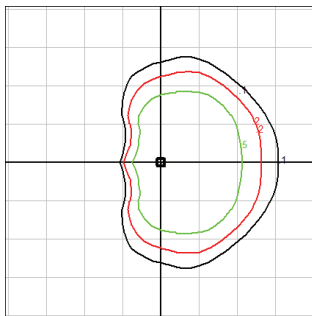


Grid Distance in Units  
 of Mounting Height at 15' Initial  
 Footcandle Values at Grade

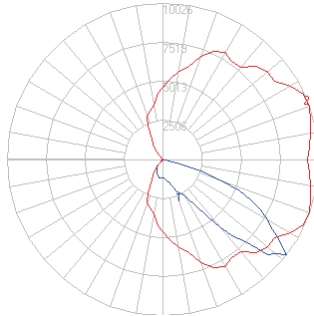


— Vertical plane through horizontal angle  
 of maximum candlepower at 45°  
 — Vertical plane through horizontal angle of 72.5°

**EWNA Type III - Asymmetric Wide (F3)**  
 13,500 Lumens, 5000K (EWNA\_F3550\_\_IES)

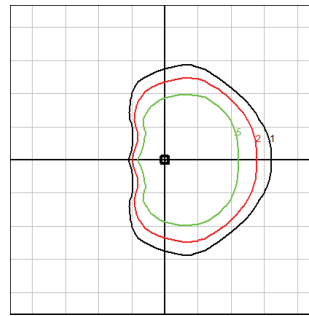


Grid Distance in Units  
 of Mounting Height at 30' Initial  
 Footcandle Values at Grade

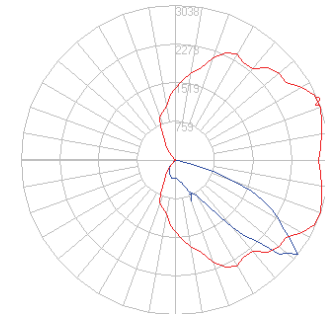


— Vertical plane through horizontal angle  
 of maximum candlepower at 20°  
 — Vertical plane through horizontal angle of 52.5°

**EWNA Type III - Asymmetric Wide (A3)**  
 4,090 Lumens, 5000K (EWNA\_A3550\_\_-120-277V.IES)

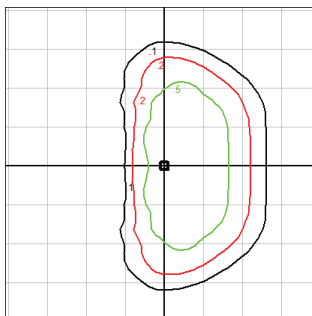


Grid Distance in Units  
 of Mounting Height at 15' Initial  
 Footcandle Values at Grade

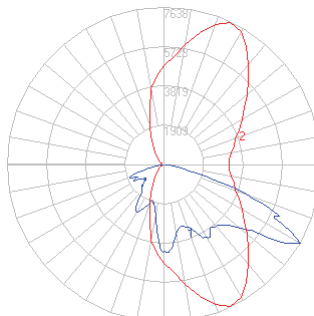


— Vertical plane through horizontal angle  
 of maximum candlepower at 20°  
 — Vertical plane through horizontal angle of 52.5°

**EWNA Type II - Asymmetric Narrow (F2)**  
 13,080 Lumens, 5000K (EWNA\_F2550\_\_IES)

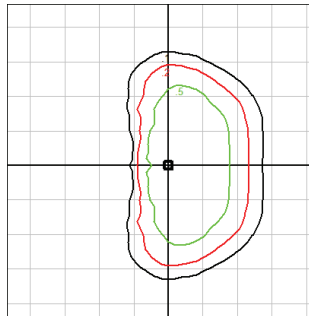


Distance in Units  
 of Mounting Height at 30' Initial  
 Footcandle Values at Grade

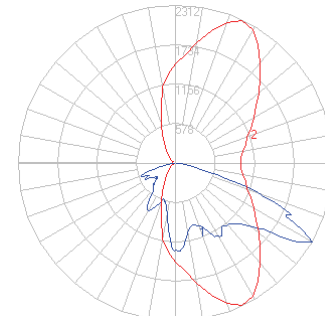


— Vertical plane through horizontal angle  
 of maximum candlepower at 65°  
 — Vertical plane through horizontal angle of 60°

**EWNA Type II - Asymmetric Narrow (A2)**  
 3,960 Lumens, 5000K (EWNA\_A2550\_\_-120-277V.IES)



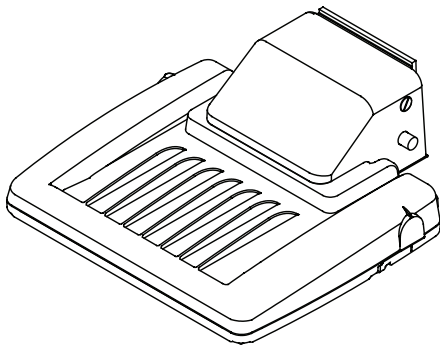
Grid Distance in Units  
 of Mounting Height at 15' Initial  
 Footcandle Values at Grade



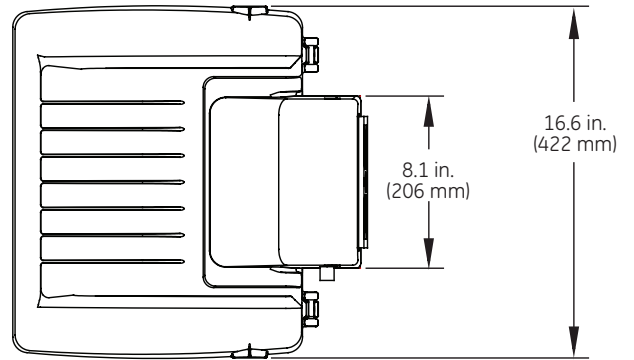
— Vertical plane through horizontal angle  
 of maximum candlepower at 65°  
 — Vertical plane through horizontal angle of 60°

# Product Dimensions

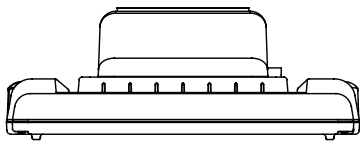
## Isometric View



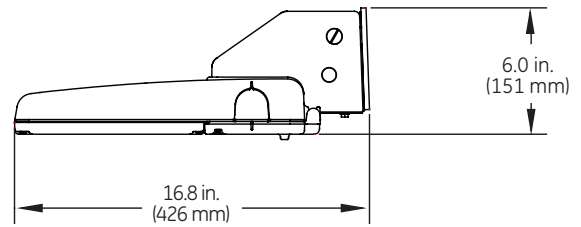
## Top View



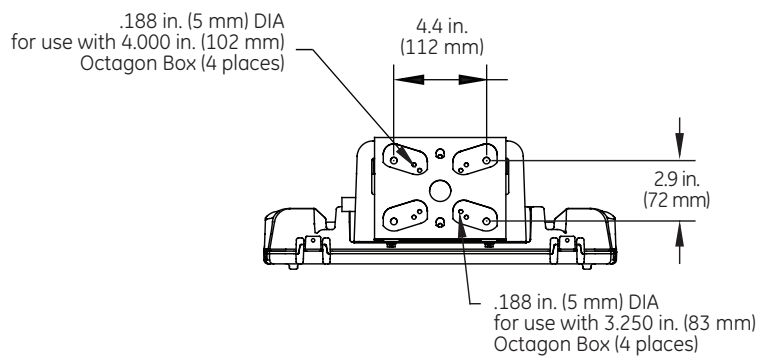
## Front View



## Side View



## Back View



### DATA

- Approximate Net Weight: 17 lbs (7.71 kgs)
- Effective Projected Area (EPA): 0.42 sq ft max (0.04 sq. m)

## Accessories:

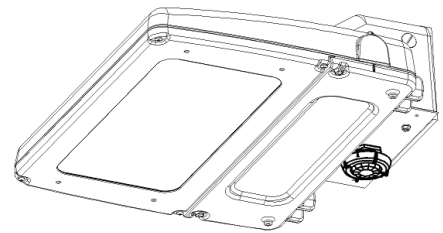
### Escutcheon Plates

Cover unsightly debris and marks left behind from replacing HID product with escutcheon plates. Available in square and rectangular sizes, as well as in an assortment of colors to match the luminaire. Accessories are ordered and shipped separately from the luminaire.

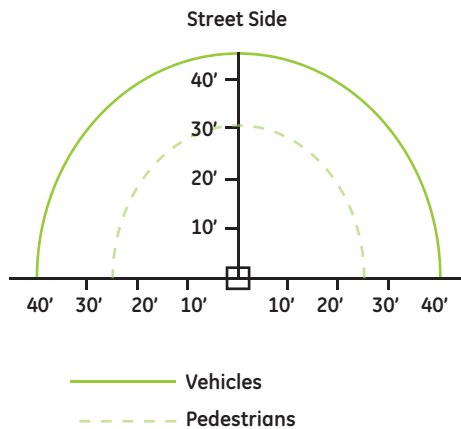
PROD. ID	PHOTOMETRIC SERIES	DETAIL	COLOR
E = Evolve W = Wall Pack N = Housing Series	E = Escutcheon Plate	1 = 17" x 11" 2 = 18" x 18"	<b>BLCK</b> = Black <b>DKBZ</b> = Dark Bronze <b>GRAY</b> = Gray <b>WHITE</b> = White  RAL custom colors available. Contact Manufacturer.

### H-Motion Sensing Option:

- Intended for mounting applications between 8-25ft.
- Provides a coverage area radius for walking motion of 15-20ft (4.57-6.10m).
- Provides 180° of coverage (~180° is blocked by the wall).
- Delivered factory setting of 50% dimmed light output with no occupancy.
- May be reprogrammed using additional remote programmer.  
Remote Programmer part number: WS FSIR-100 PROGRAMMER (197634).
- Photoelectric control is integrated through the motion sensor, and is offered as standard.



### Sensor Pattern:



### Sensing Pattern Wall Pack Fixture 8 – 25 ft.



[www.gelighting.com](http://www.gelighting.com)

GE and the GE Monogram are trademarks of the General Electric Company. All other trademarks are the property of their respective owners. Information provided is subject to change without notice. All values are design or typical values when measured under laboratory conditions. GE Lighting is a business of the General Electric Company.  
© 2016 GE.

OLP3079 (Rev 05/19/16)