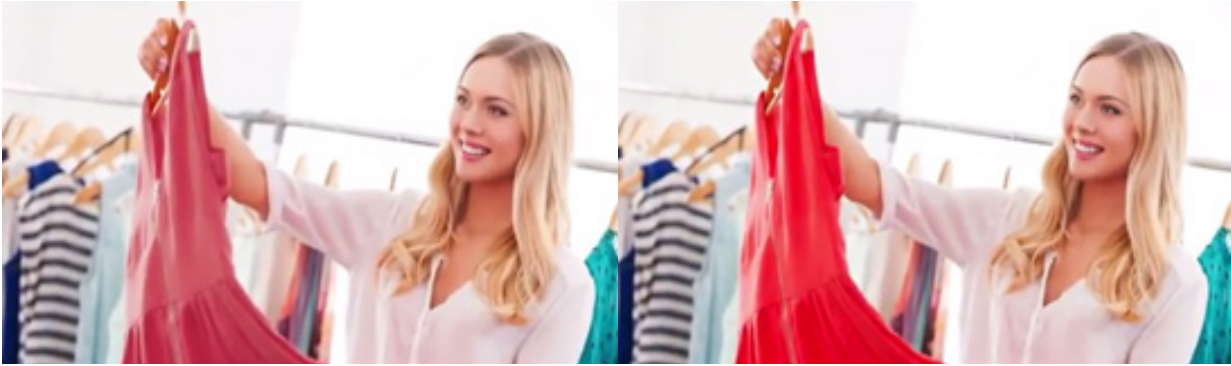


# Refit solutions from GE



Application illustration only, subject lamps not used in photo.

## High CRI with reveal® TriGain™ Technology Type A LED Tubes – Glass



Unlike most LED Lamps, GE's High CRI LED Tube utilizes reveal® TriGain™ Technology to enhance color rendering without decreasing efficiency. An ideal solution for retailers and others seeking high CRI without compromising on energy efficiency. GE's Type A integrated LED tubes run on electronic T8 instant-start or programmed start ballasts.

### FEATURES

- 2', 3' & 4' glass tubes
- 950 – 3,150 lumen options available
- >110 lumens per watt (LPW)
- Available in 3500K, 4000K and 5000K color temperatures
- 70,000 hours
- UL and cUL listed
  - in compliance with 1598 certification
- Open or enclosed fixtures
- Dimmable\* 5-year limited warranty

### BENEFITS

- Better quality of light
  - >90 CRI provides overall superior color quality
  - >50 R9 provides vivid reds
  - Best option for displaying merchandise
- Fast and Easy LED upgrade
- 2.3X longer life than LFL (70,000 vs. 30,000 hours)
- Fully illuminates fixture
  - >270° light distribution
- No UV
- Easy disposal, non-hazardous waste

\*Check ballast compatibility at:  
[www.gelighting.com/LEDTUBES-ballast-compatibility](http://www.gelighting.com/LEDTUBES-ballast-compatibility)

To learn more about saving money and energy,  
go to: <http://products.currentbyge.com>.

# Product Specifications

## Integrated Refit LED Tubes

GE Product Code	Description	Bulb Shape	Base	Low BF Watts	Normal BF Watts	High BF Watts	Case Qty	Length (in)	Low BF Initial Lumens	Normal BF Initial Lumens	High BF Initial Lumens	Color Temp. (K)	CRI	R9	Rated Life (L70)	DLC #1
<b>2ft LED Tube</b>																
34337	LED9ET8/G/2/935	T8	Med Bi-Pin (G13)	8	9	13	20	24"	1050	1200	1600	3500	90+	60+	70,000	-
34341	LED9ET8/G/2/940	T8	Med Bi-Pin(G13)	8	9	13	20	24"	1050	1200	1600	4000	90+	50+	70,000	-
34342	LED9ET8/G/2/950	T8	Med Bi-Pin(G13)	8	9	13	20	24"	1100	1250	1700	5000	90+	50+	70,000	-
<b>3ft LED Tube</b>																
34323	LED11ET8/G/3/935	T8	Med Bi-Pin (G13)	9.5	11	15	20	36"	1400	1550	2100	3500	90+	60+	70,000	-
34326	LED11ET8/G/3/940	T8	Med Bi-Pin(G13)	9.5	11	15	20	36"	1400	1600	2150	4000	90+	50+	70,000	-
34332	LED11ET8/G/3/950	T8	Med Bi-Pin(G13)	9.5	11	15	20	36"	1400	1600	2150	5000	90+	50+	70,000	-
<b>4ft LED Tube</b>																
34307	LED15ET8/G/4/935	T8	Med Bi-Pin(G13)	13.5	15	21.5	20	48"	1900	2150	2800	3500	90+	60+	70,000	Yes
34313	LED15ET8/G/4/940	T8	Med Bi-Pin(G13)	13.5	15	21.5	20	48"	1950	2200	2850	4000	90+	50+	70,000	Yes
34316	LED15ET8/G/4/950	T8	Med Bi-Pin(G13)	13.5	15	21.5	20	48"	2000	2250	2850	5000	90+	50+	70,000	Yes

### System Watts

Refit LED Tubes

Ballast Factor	LED10ET8/G/4/xxx Rated Lumens	LED Approx. System Watts per tube	F32T8 Approx. System Watts per lamp
L (232MAX-G-L)	1950	15.5	25
N (232MAX-G-N)	2200	17	28
H (232MAX-G-N)	2850	24.5	37

Lumen and wattage numbers above are approximations that can be used for estimates only. LED System Watts - Add Approximately 15% to LED Tube wattage for driver losses.

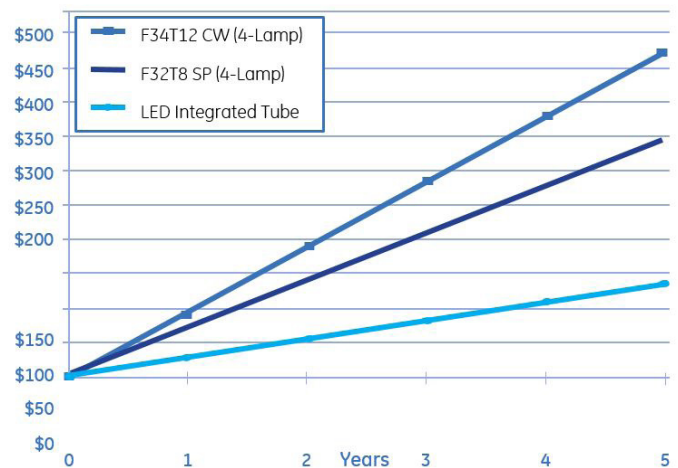
### Savings Breakdown

Save 66% compared to standard T8 (4-lamp) light fixtures over a five-year period.  
Provides 4600 lumens at 36W vs. 6600 lumens at 148W in a 4 lamp T12 system.

Check ballast compatibility at [www.gelighting.com/LEDTUBES-ballast-compatibility](http://www.gelighting.com/LEDTUBES-ballast-compatibility)

### Cumulative Energy Costs

Cumulative Costs



Savings calculations are based on energy costs using \$0.11 per kWh and 16 hours of daily operation.

ecomagination<sup>SM</sup>

reveal  
TriGain  
technology from GE



Product is compliant with material restriction requirements of RoHS

**current**  
powered by GE

<http://products.currentbyge.com>

GE and the GE Monogram are trademarks of the General Electric Company. All other trademarks are the property of their respective owners. Information provided is subject to change without notice. All values are design or typical values when measured under laboratory conditions. GE Lighting and GE Lighting Solutions, LLC are businesses of the General Electric Company. © 2018 GE.

LEDL058 (Rev 05/24/18)

