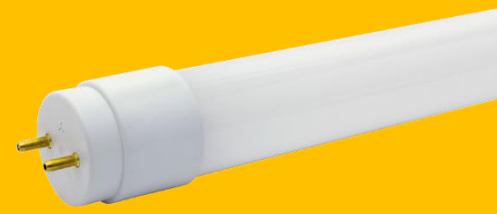


GE + Lutron Type C LED Retrofit System Performance Guide



Current, powered by GE is pairing GE's Type C LED tubes with Lutron's LED drivers. The light quality of GE TLED lamps, combined with the high-performance dimming and control capability of Lutron drivers, enables fluorescent systems using existing Lutron ballasts to be upgraded to the latest LED technology. Use of a Lutron driver ensures compatibility with any existing EcoSystem or 2-wire Lutron control system.

Application guidance for Lutron Driver Family selection:

Driver Family	Description	Application	Control Technology	Line Voltage
LDE1	Hi-lume 1% with Soft-On and Fade-to-Black	High performance architectural dimming applications	EcoSystem digital	120/277
LDE5	5-Series	General purpose dimming	EcoSystem digital	120/277
LTE	Hi-lume 1% 2-wire	Switching retrofits	Two-wire phase control	120 only

For more information about the Lutron drivers, visit: www.lutron.com/hilumeled.

Detailed Product Specifications

For all GE + Lutron systems:

BULB SHAPE	DRIVER	CASE qty	LAMP CASE qty	CRI	*RATED LIFE L70
T8		10	20	80+	50,000

Make to order. Minimum order quantity: 1000 lamps. 12-16 week lead time.

Lutron driver and GE TLED lamp combinations may be selected from the table below based on application needs.

DRIVER FAMILY		LDE1 (1%)		LDE5 (5%)		LTE (1%)							
# OF LAMPS	SYSTEM WATTS	DRIVER PRODUCT CODE	DRIVER DESCRIPTION	DRIVER PRODUCT CODE	DRIVER DESCRIPTION	DRIVER PRODUCT CODE	DRIVER DESCRIPTION	LAMP PRODUCT CODE	LAMP DESCRIPTION	MOL (IN)	SYSTEM LUMENS	SYSTEM LPW	COLOR TEMP (K)
1	10	38629	LDE11U1UMN- -LA027	38654	LDE51U1UMN- -LA027	38707	LTEA4U1UMN- -HA027	38841	LEDT8/G/2/830EXT	24	1000	100	3000K
								34140	LEDT8/G/2/835EXT	24	1000	100	3500K
								34147	LEDT8/G/2/840EXT	24	1100	110	4000K
								34156	LEDT8/G/2/850EXT	24	1100	110	5000K
	15	38630	LDE12U1UMN- -NA044	38668	LDE52U1UMN- -NA044	38712	LTEA4U1UMN- -HA044	38842	LEDT8/G/4/830EXT	48	1850	123	3000K
								34036	LEDT8/G/4/835EXT	48	1900	127	3500K
								34138	LEDT8/G/4/840EXT	48	1950	130	4000K
								34139	LEDT8/G/4/850EXT	48	2050	136	5000K
	22	38633	LDE13U1UMN- -BA062	38678	LDE53U1UMN- -BA062	38723	LTEA4U1UMN- -HA062	38842	LEDT8/G/4/830EXT	48	2550	115	3000K
								34036	LEDT8/G/4/835EXT	48	2600	118	3500K
								34138	LEDT8/G/4/840EXT	48	2700	123	4000K
								34139	LEDT8/G/4/850EXT	48	2800	127	5000K
2	19	38640	LDE12U1UMN- -NA054	38691	LDE52U1UMN- -NA054	38732	LTEA4U1UMN- -HA054	38841	LEDT8/G/2/830EXT	24	2000	105	3000K
								34140	LEDT8/G/2/835EXT	24	2000	105	3500K
								34147	LEDT8/G/2/840EXT	24	2200	115	4000K
								34156	LEDT8/G/2/850EXT	24	2200	115	5000K
	30	38646	LDE13U1UMN- -BA088	38702	LDE53U1UMN- -BA088	38739	LTEA4U1UMN- -JA088	38842	LEDT8/G/4/830EXT	48	3700	123	3000K
								34036	LEDT8/G/4/835EXT	48	3800	126	3500K
								34138	LEDT8/G/4/840EXT	48	3900	130	4000K
								34139	LEDT8/G/4/850EXT	48	4100	137	5000K
	44	38653	LDE15U1UMN- -CA124	38704	LDE55U1UMN- -CA124	---	---	38842	LEDT8/G/4/830EXT	48	5100	115	3000K
								34036	LEDT8/G/4/835EXT	48	5200	118	3500K
								34138	LEDT8/G/4/840EXT	48	5400	123	4000K
								34139	LEDT8/G/4/850EXT	48	5600	127	5000K

Control Compatibility

Use of Lutron drivers enables compatibility with the following Lutron control systems. Please check driver specifications on www.lutron.com/hilumeled for the most up-to-date driver and control compatibility lists.

Lutron EcoSystem controls compatible with **LDE1** and **LDE5** drivers:

Product	Model	Compatible Systems			
		None (Standard)	Vive	Quantum	HomeWorks QS
PowPak Dimming Module	RMJ-ECO32-DV-B	•			
PowPak Wireless Fixture Control	FCJS-ECO		•		
Energi Savr Node	QSN-1ECO-S			•	
	QSN-2ECO-S				
Grafik Eye QS	QSGRJ-_E			•	•
	QSGR-_E				
Quantum Hub	QP2-			•	
HomeWorks QS DIN Module	LQSE-2ECO-D				•

Lutron two-wire phase controls compatible with **LTE** drivers:

Product	Model	Compatible Systems									
		None (Standard)	Vive	Caseta	RadioRA 2	HomeWorks	HomeWorks QS	myRoom	LCP	GRAFIK Systems	Quantum
Ariadni C•L	AYCL-253P-	•									
Diva C•L	DVCL-253P-										
Nova T* C•L	NTCL-250-										
Maestro Wireless	MRF2S-6ND-120-		•								
Caseta Wireless	PD-10NXD-			•							
Grafik T C•L	GT-250M-				•		•				
	GTJ-250M-										
HomeWorks QS Wallbox	HQRD-6NA-				•		•				
	HQRD-10ND-										
RadioRA 2	RRD-6NA-				•						
	RRD-10ND-										
myRoom DIN	MQSE-4A1-D							•			
HomeWorks QS DIN	LQSE-4A1-D						•				
HomeWorks Power Module	HWI-WPM-6D-120					•	•				
Grafik Eye QS	QSGR-						•				•
	QSGRJ-										
Grafik Eye 3000	GRX-3100									•	
	GRX-3500										
RPM-4U Module	HW-RPM-4U-120					•			•	•	•
	LP-RPM-4U-120										
RPM-4A Module	HW-RPM-4A-120					•			•	•	•
	LP-RPM-4A-120										
GP Dimming Panels	Various								•	•	•



Lutron • www.lutron.com • 1.844.LUTRON1 (1.844.588.7661)

LUTRON Lutron, and EcoSystem are trademarks of Lutron Electronics Co., Inc registered in the US and other countries. NEC is a registered trademark of the National Fire Protection Association, Quincy, Massachusetts. UL is a registered trademark of Underwriters Laboratories, Inc.



<http://products.currentbyge.com>.



GE and the GE Monogram are trademarks of the General Electric Company. All other trademarks are the property of their respective owners. Information provided is subject to change without notice. All values are design or typical values when measured under laboratory conditions. GE Lighting and GE Lighting Solutions, LLC are businesses of the General Electric Company. © 2019 GE.

13579-092914 (Rev 04/29/2019)